



Developing America's Newest Met Coal Complex  
Allegheny Metallurgical - Longview Mine – May 9, 2023



- Project development and permitting began in 2008.
- Ground was broken in January of 2019.
- Century Mining was rebranded as Allegheny Metallurgical in mid-2021.
- The Longview Mine utilizes continuous miners and a longwall system that will produce 3.8 million tons of clean coal annually, 3.1 million tons of met.
- The capital investment in the project will be more than \$600 million.
- The project has proven coal reserves to produce coal through 2048.
- The Allegheny Met Project will employ  $\approx$  474 full time employees.



# ALLEGHENY METALLURGICAL

A WEST VIRGINIA-BASED  
METALLURGICAL COAL  
MINING COMPANY

# Strategic Shareholders

Our shareholders are experienced coal and steel investors and will underpin Allegheny's offtake strategy



- Established in 1986, American Metals and Coal International (AMCI) is one of the world's leading, privately owned natural resources companies
- Portfolio of operations and businesses with net equity value >\$2 billion
- AMCI has developed, built, and operated various coal mines globally representing nearly 200Mt and has operational experience across the value chain
- AMCI has led North Central Resources (NCR) development since 2008 and owns 42.4%

## JAZ VENTURES LLC

- JAZ Ventures LLC is owned by Scott Kroh and family, founders of Robindale Energy
- Robindale's initial focus was waste coal reclamation, but through affiliates has expanded into power generation, metallurgical coal and limestone mining, bulk materials logistics, and brokerage / trading
- JAZ has been a shareholder in NCR since 2008, has been instrumental in developing the project and owns 10.6%



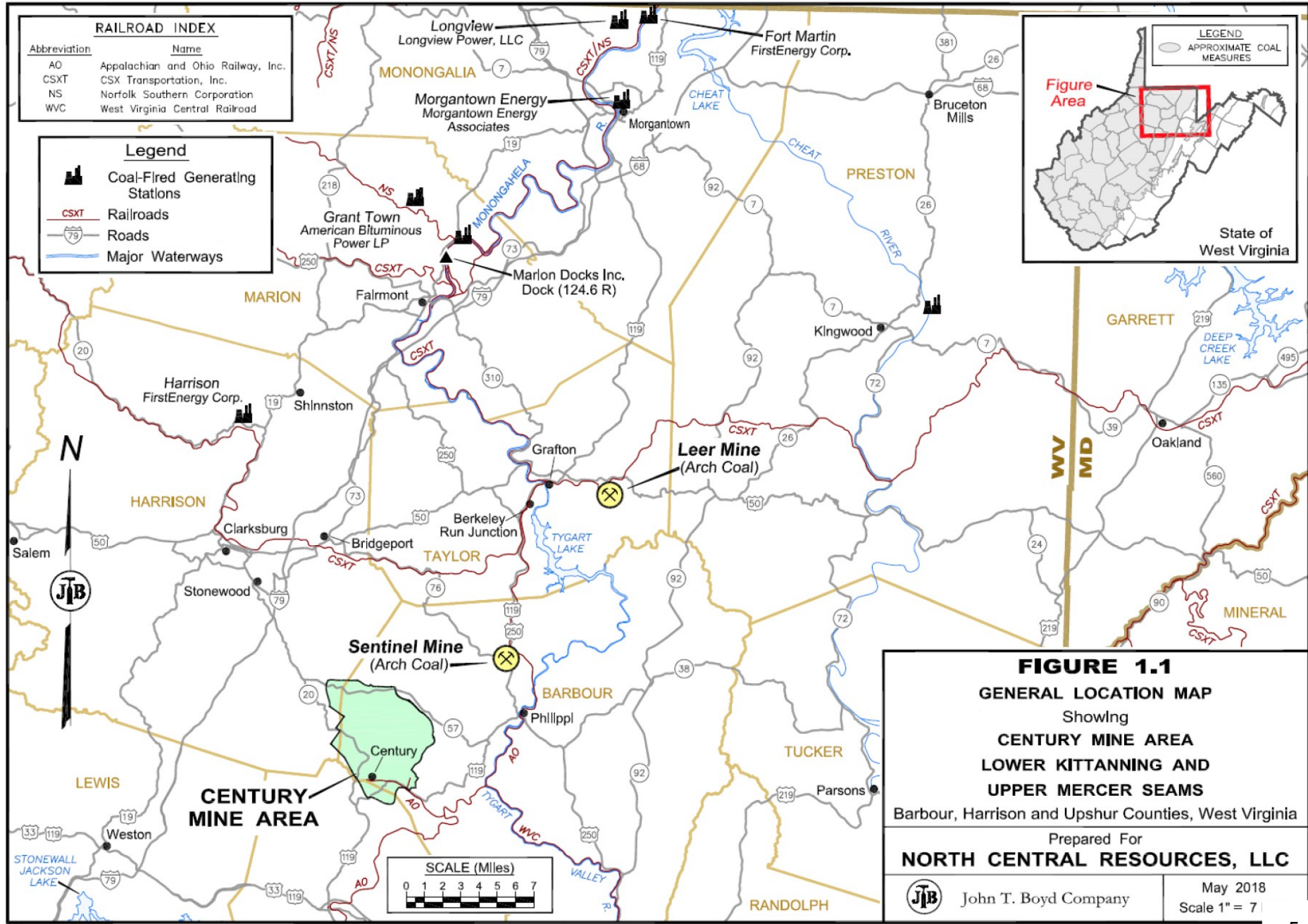
- Established in 1968 as South Korea's first domestic steel producer
- One of South Korea's largest companies with a net equity value of ~\$40 billion
- Currently one of the world's 5 largest steel producers with annual crude steel production over 40Mtpa
- POSCO has been invested in NCR since 2011 and currently owns 22%



- Founded in 1858, Itochu is one of Japan's largest corporations with a net equity value in excess of \$30 billion
- Itochu's Metals & Minerals Division is an experienced investor and trader of steel-feed raw materials, including met coal and iron ore
- Itochu became a 25% shareholder in NCR in December 2019



Allegheny  
Metallurgical  
Volga, West Virginia



**RAILROAD INDEX**

Abbreviation	Name
AO	Appalachian and Ohio Railway, Inc.
CSXT	CSX Transportation, Inc.
NS	Norfolk Southern Corporation
WVC	West Virginia Central Railroad

**ETZEL Legend**

- Coal-Fired Generating Stations
- Railroads
- Roads
- Major Waterways



Longview  
Mine Portal

Dry Refuse  
Disposal Area

High Carbon  
Processing

Slurry  
Impoundment

Fresh Water  
Impoundment

Rail Loop &  
Clean Coal

7744 Buckhannon Rd,  
Volga, WV 26238

Longview Mine Portal  
March 28, 2019



# Longview Mine Portal





Slope, Raw Coal, Scalping System, and Preparation Plant Area April 1, 2019



# Slope Conveyors, Raw Coal, Scalping System, and Preparation Plant



Rail Loop & Clean Coal  
Area June 20, 2019



**Rail Loop & Clean Coal Storage  
- 100 Car Unit Train Loading**



# Project Challenges – The Site





# Project Challenges – Covid & The Supply Chain





US MOTORS

HQ-301

DELUGE VALVE  
ENCLOSURE

Pillar





# Project Challenges – Longwall System

# Caterpillar confirms closure of historic German mining equipment factories

CAT

Posted by Paul Moore on 3rd September 2020



Further to its statement in March 2020 that it was considering the closure of the historic Luenen underground coal longwall (and plow) mining equipment factory, the associated Wuppertal operations as well as the former O&K factory in Dortmund which produces hydraulic mining shovels, Caterpillar confirmed in August 2020 that the plants will be shuttered.

On August 17, the company released a statement to the German media saying: “Today (8/17) Caterpillar Inc. announced it has finalised a contemplated decision for the Longwall and Hydraulic Mining Shovel (HMS) businesses, previously announced on March 5, 2020. Caterpillar will restructure the longwall business and close the Luenen and Wuppertal, Germany, facilities with the consolidation of production into other locations. Caterpillar will restructure the HMS business and close the Dortmund, Germany, facility.”

Joy  
March  
18, 2021

To adapt our business to the changing dynamics of the underground coal industry where our customers strive to reduce initial investment costs, maximize performance, and increase automation for safer and more sustainable operations, we are redefining our global longwall business model. This will enable us to remain a strong and sustainable company focusing on our core strengths to create value for our customers.

As a result, we will no longer be manufacturing our powered roof support (PRS) product line. Over the next 24 months, we are considering closing our Worcester and Manchester manufacturing facilities; however, Joy remains fully committed to supporting and serving the global longwall market and our customers.

Moving forward, we will continue to provide Joy designed and engineered PRS solutions through several possible options including partnerships with third party PRS manufacturers. In addition, we will continue to manufacture our Joy armored face conveyors, shearers, and longwall controls (including PRS controls and valves) and provide project management and integration services for longwall systems. We will continue to follow our longwall automation roadmap delivering the highest levels of longwall automation, remote operation, and integration in the industry.

Following this transition, we will continue to provide technical expertise, engineering and product support, spare parts and repair/rebuild services, software, and control system development for longwall systems including PRS's. Customer focus will continue to be our priority. We are dedicated to ensuring we maintain the same excellent customer service and support you have come to expect.



Lubelski Węgiel  
"Bogdanka" SA

FAMUR

GLINK-12/31-POz  
(2x5027 kW)

FAMUR

UWAGA  
DANGER

+

FAMUR

FAMUR  
GOSK

FAMUR  
GOSK

FAMUR  
GOSK

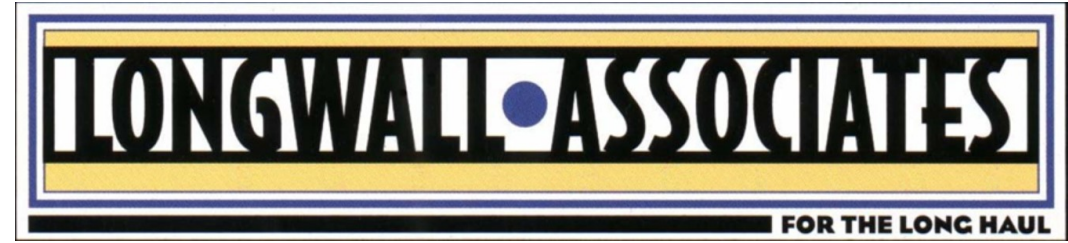
FAMUR  
GOSK

FAMUR  
GOSK





A World  
Class  
Longwall  
System  
Coming  
Online



THIELE®



# Project Challenges – How to Overcome







FAMUR  
KESKIM

FAMUR  
GOSC

3509

7650













# Closing Thoughts

- You must execute the business plan, keep this in focus and do everything possible to avoid this to be derailed
- Be willing to evaluate alternatives and quickly change course
- Do not look for the easy path but challenge yourself and team to find the best path given constraints
- The devil is always in the detail; don't be afraid to do the work needed to get the required results
- “Surround yourself with good people, despite anything you may do to screw it up, they will make you look good”,  
George Graham

# ATTITUDE by Charles Swindoll

“The longer I live, the more I realize the impact of attitude on life. Attitude, to me, is more important than facts. It is more important than the past, than education, than money, than circumstances, than failures, than successes, than what other people think, say or do. It is more important than appearance, giftedness or skill. It will make or break a company... a church... a home. The remarkable thing is we have a choice every day regarding the attitude we embrace for that day. We cannot change our past... we cannot change the fact that people will act in a certain way. We cannot change the inevitable. The only thing we can do is play the one string we have, and that is our attitude... I am convinced that life is 10% what happens to me and 90% how I react to it.

And so it is with you... we are in charge of our Attitudes”